



RFU CHAMPIONSHIP STATS

STANDINGS

Week 15 saw quite possibly the biggest match of the season between the league's top two teams and it was Bristol that came out on top to replace Exeter as leaders of the Championship.

Cornish Pirates ended Plymouth's four match winning streak in style by running in 7 tries to secure their try bonus point win.

A full house at Goldington Road saw a thriller as both teams were still level after 70 minutes, it was the home team that were able to edge out their opponents however with a well worked try in the dying minutes.

The only other game to be played saw Moseley retain the bragging rights over rivals Coventry which moves them back into 8th place and a play-off spot.

Unfortunately Nottingham and Rotherham were not able to overcome the cold snap and both games had to be postponed for a second time because of the frost.

| Teams | P | W | D | L | F | A | Diff | BP | Pts |
|-------------------------|----|----|---|----|-----|-----|------|----|-----|
| Bristol Rugby | 15 | 13 | 0 | 2 | 431 | 236 | 195 | 10 | 62 |
| Exeter Chiefs | 15 | 13 | 0 | 2 | 453 | 253 | 200 | 6 | 58 |
| Cornish Pirates | 15 | 9 | 0 | 6 | 378 | 281 | 97 | 5 | 41 |
| London Welsh * | 15 | 9 | 0 | 6 | 337 | 272 | 65 | 8 | 39 |
| Nottingham | 13 | 8 | 0 | 5 | 328 | 268 | 60 | 7 | 39 |
| Bedford Blues | 15 | 7 | 1 | 7 | 372 | 281 | 91 | 7 | 37 |
| Plymouth Albion | 15 | 7 | 0 | 8 | 257 | 348 | -91 | 4 | 32 |
| Moseley | 15 | 6 | 0 | 9 | 306 | 393 | -87 | 5 | 29 |
| Doncaster Knights | 14 | 6 | 0 | 8 | 233 | 234 | -1 | 4 | 28 |
| Rotherham Titans | 14 | 4 | 0 | 10 | 243 | 340 | -97 | 7 | 23 |
| Coventry † | 15 | 4 | 1 | 10 | 252 | 355 | -103 | 5 | 8 |
| Birmingham & Solihull † | 13 | 0 | 0 | 13 | 166 | 495 | -329 | 2 | -13 |

* London Welsh deducted 5 points

† Birmingham & Solihull and Coventry deducted 15 points

In Stage 2 of the RFU Championship, clubs in yellow will play in Pool A, clubs in green will play in Pool B. The clubs below the dotted line will play in Pool C.

THIS WEEK'S RESULTS

Saturday 26th December

Bedford Blues 30 – 23 London Welsh

Moseley 26 – 20 Coventry

Sunday 27th December

Cornish Pirates 46 – 7 Plymouth Albion

Exeter Chiefs 16 – 25 Bristol Rugby

Monday 28th December

Nottingham P – P Doncaster Knights

Rotherham Titans P – P Birmingham & Solihull

UPCOMING FIXTURES

Friday 1st January

Bristol Rugby – Cornish Pirates

Saturday 2nd January

Birmingham & Solihull - Bedford Blues

London Welsh - Exeter Chiefs

Rotherham Titans - Nottingham



Coventry - Doncaster Knights
Plymouth Albion - Moseley

POINTS

TOP TRY SCORERS

| Player | Club | Try |
|------------------------|-----------------|-----|
| Dan Norton | Bristol | 9 |
| Tom Arscott | Bristol | 8 |
| Luke Fielden | Bedford | 7 |
| Blair Cowan | Cornish Pirates | 7 |
| Errie Claassens | London Welsh | 7 |
| Ian Davey | Bedford | 6 |
| Jack Adams | Bristol | 6 |
| Wes Davies | Cornish Pirates | 6 |
| Matthew Jess | Exeter | 6 |
| Richard Baxter | Exeter | 6 |

Hat-Tricks

| | | |
|----------------|---|-------------------------------|
| Ian Davey | Bedford Blues v Birmingham & S | 10 th October 2009 |
| Richard Baxter | Exeter Chiefs v Rotherham Titans | 24 th October 2009 |
| Tom Arscott | Bristol v Coventry | 30 th October 2009 |

TOP POINTS SCORERS

| Player | Club | Try | Conv | Pen | DG | Total |
|-------------------------|-----------------|-----|------|-----|----|------------|
| Gareth Steenson | Exeter | | 30 | 29 | | 147 |
| Adrian Jarvis | Bristol | | 32 | 25 | | 139 |
| Aled Thomas | London Welsh | 2 | 18 | 30 | | 136 |
| Tristan Roberts | Moseley | | 13 | 33 | 1 | 128 |
| Jonny West | Rotherham | | 11 | 26 | 3 | 109 |
| James Pritchard | Bedford | 2 | 18 | 20 | | 106 |
| Keiran Hallett | Plymouth | 3 | 10 | 16 | 2 | 89 |
| Robert Cook | Cornish Pirates | 4 | 13 | 13 | | 85 |
| Alistair Warnock | Doncaster | 1 | 16 | 12 | 3 | 82 |

TRIES BY CLUB

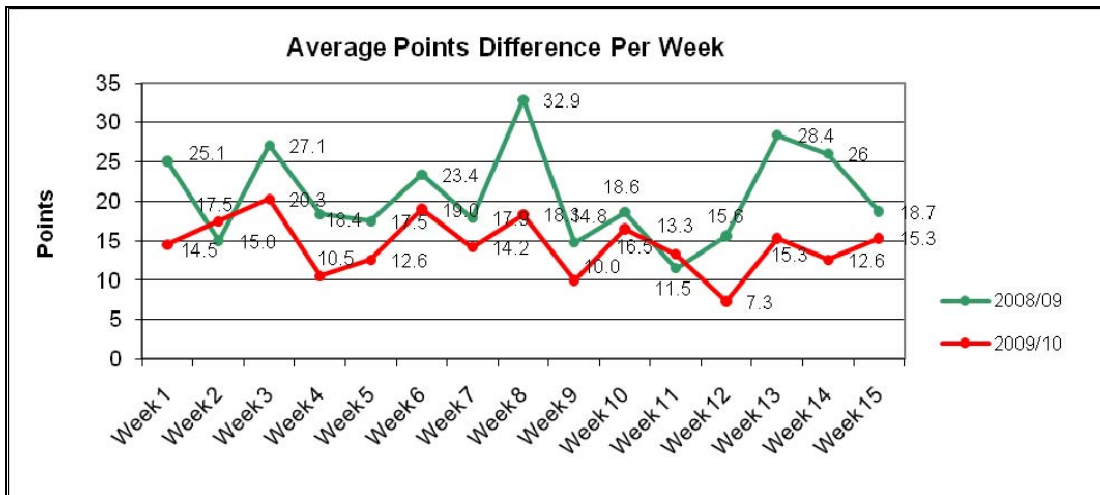
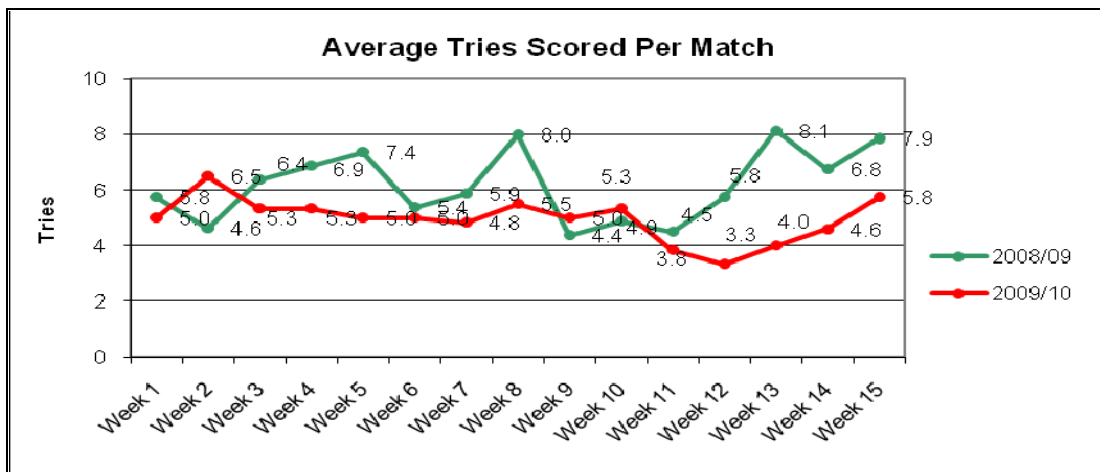
| | Weeks 1-10 | Week 11 | Week 12 | Week 13 | Week 14 | Week 15 | Total |
|---------------------|------------|-----------|-----------|-----------|-----------|-----------|------------|
| Bristol | 36 | 5 | 4 | 3 | 5 | 4 | 57 |
| Exeter | 41 | 3 | 1 | 6 | 1 | 1 | 53 |
| Cornish P | 32 | 0 | 2 | 1 | 3 | 7 | 45 |
| Bedford | 34 | 2 | 2 | 1 | 1 | 3 | 43 |
| Nottingham | 35 | 1 | 1 | 4 | - | - | 41 |
| London Welsh | 24 | 3 | 2 | 4 | 3 | 2 | 38 |
| Coventry | 19 | 2 | 3 | 1 | 2 | 3 | 30 |
| Moseley | 25 | 1 | 1 | 0 | 0 | 2 | 29 |
| Plymouth A | 18 | 4 | 2 | 2 | 2 | 1 | 29 |
| Doncaster | 19 | 1 | 0 | 2 | 2 | - | 24 |
| Rotherham | 16 | 1 | 2 | 0 | 4 | - | 23 |
| Birmingham | 18 | 0 | 0 | 0 | - | - | 18 |
| Weekly Total | 317 | 23 | 20 | 24 | 23 | 23 | 430 |



TRY SCORING TRENDS

Week 15 produced 23 tries however as there were only 4 fixtures played this meant the average saw a gradual increment from last week. Weather conditions were slightly milder than in previous weeks which allowed teams to play some more expansive rugby.

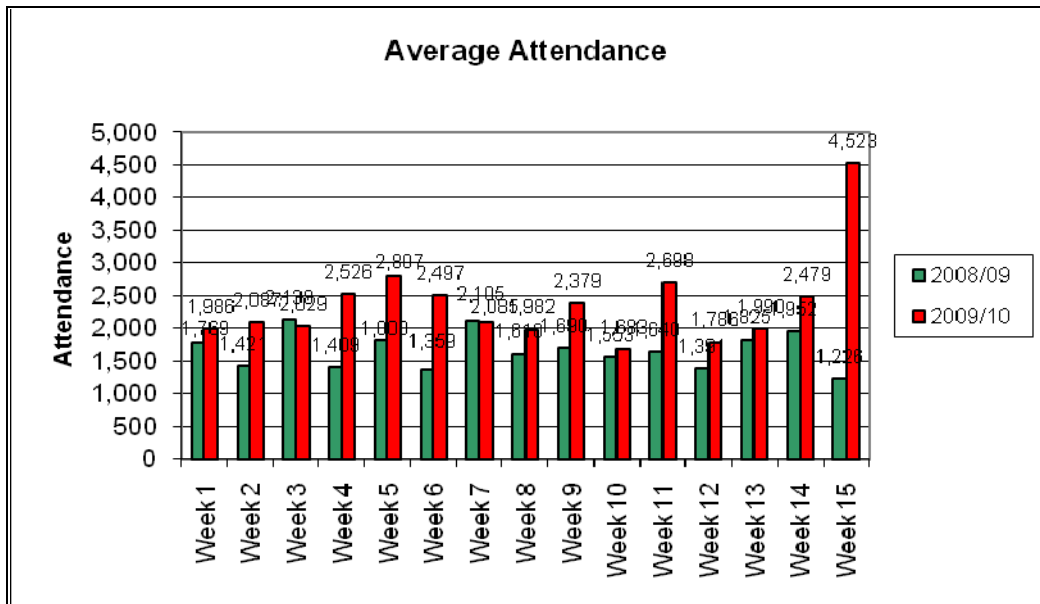
At the just over the half way point, Average Points Difference also remained similar to previous weeks proving that the RFU Championship is still being highly competitive. This was probably helped with the fixtures this weekend as teams were not going to give up the bragging rights over their rivals with ease.





ATTENDANCES

Average attendances in the RFU Championship shot through the roof and easily surpassed the equivalent week from last season – an average of 4,528 were at each match. Exeter also broke this season’s record for highest attendance at a match as they drew in a massive 7,405 spectators to see the Boxing day derby between rivals Bristol.



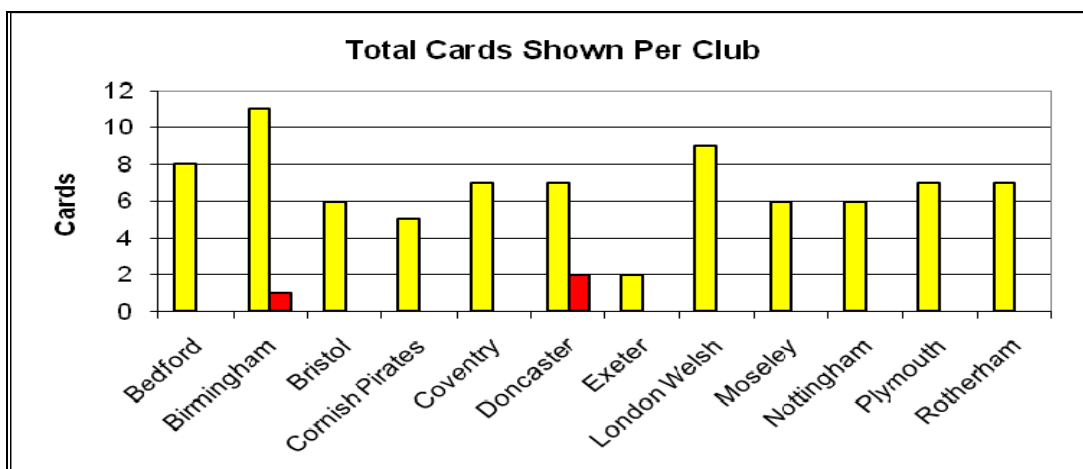
ATTENDANCE FIGURES

| Club | 07-Nov | 14-Nov | 05-Dec | 12-Dec | 19-Dec | 26-Dec | Sub Total |
|-----------------------|---------------|---------------|---------------|---------------|---------------|---------------|----------------|
| Bedford | | 2282 | | 2353 | | 4033 | 22,064 |
| Birmingham & S | | 477 | | 407 | | | 4,047 |
| Bristol | | 4784 | 4440 | | 4869 | | 40,306 |
| Cornish Pirates | 2465 | | | 2667 | | 5654 | 22,758 |
| Coventry | 1133 | | 1306 | | 802 | | 10,454 |
| Doncaster | 1312 | | 1365 | | 1334 | | 11,735 |
| Exeter | | 6158 | | 3952 | | 7405 | 34,366 |
| London Welsh | | 874 | 910 | | 961 | | 10,305 |
| Moseley | 978 | | 901 | | | 998 | 7,237 |
| Nottingham | 1216 | | | 1303 | | | 8,600 |
| Plymouth | 2993 | | 1795 | | 4430 | | 22,174 |
| Rotherham | | 1610 | | 1257 | | | 7,845 |
| Sub Total | 10,097 | 16,185 | 10,717 | 11,939 | 12,396 | 18,090 | 201,891 |
| Weekly Average | 1,683 | 2,698 | 1,786 | 1,990 | 2,479 | 4,523 | 2,321 |

Highest 7,405 Exeter Chiefs v Bristol December 26th
 Lowest 367 Birmingham v Exeter Chiefs October 17th



DISCIPLINE



CARDS BY TYPE

| Week 15 | Yellow Cards | | | Red | Total Cards |
|---------|--------------|-----------|-------|-----|-------------|
| | Technical | Foul Play | Total | | |
| 2008/09 | 3 | 3 | 6 | 0 | 6 |
| 2009/10 | 2 | 2 | 4 | 0 | 4 |

| Season | Yellow Cards | | | Red | Total Cards |
|---------|--------------|-----------|-------|-----|-------------|
| | Technical | Foul Play | Total | | |
| 2008/09 | 94 | 40 | 134 | 4 | 138 |
| 2009/10 | 45 | 38 | 83 | 3 | 86 |

CARDS BY CLUB

| Club | Yellow | YR | Red | Total |
|-----------------|--------|----|-----|-------|
| Bedford | 8 | | | 8 |
| Birmingham | 11 | | 1 | 12 |
| Bristol | 6 | | | 6 |
| Cornish Pirates | 5 | | | 5 |
| Coventry | 7 | | | 7 |
| Doncaster | 7 | 1 | 2 | 9 |
| Exeter | 2 | | | 2 |
| London Welsh | 9 | | | 9 |
| Moseley | 8 | | | 8 |
| Nottingham | 6 | | | 6 |
| Plymouth | 7 | | | 7 |
| Rotherham | 7 | | | 7 |
| | 83 | 1 | 3 | 86 |