



RFU CHAMPIONSHIP STATS

STANDINGS

Week 13 wasn't unlucky for Exeter as they recorded their 13th straight victory and picked up a bonus point as they touched down 6 times against Coventry. Bristol kept up the chase with victory at Rotherham but were unable to secure a bonus point despite keeping the home side off the score sheet. Nottingham returned to winning ways after losing 4 in a row in the RFU Championship and London Welsh moved into fourth position with a win at bottom club Birmingham & Solihull as Bedford were beaten at home by Plymouth Albion who scored a late try to claim four points.

Doncaster moved to within a point of the last Promotion Playoff spot with a hard fought 10-12 win at Cornish Pirates as teams from fourth to eighth position are separated by just 12 points.

Team	P	W	D	L	F	A	Diff	B Pts	Pts
Exeter Chiefs	13	13	0	0	424	205	219	6	58
Bristol Rugby	13	11	0	2	369	204	165	8	52
Nottingham	13	8	0	5	328	268	60	7	39
London Welsh*	13	8	0	5	284	218	66	6	33
Bedford Blues	13	6	1	6	326	221	105	7	33
Cornish Pirates	13	7	0	6	305	262	43	4	32
Plymouth Albion	13	6	0	7	227	289	-62	4	28
Moseley	13	5	0	8	277	359	-82	5	25
Doncaster Knights	13	5	0	8	219	231	-12	4	24
Coventry	13	4	1	8	220	302	-82	4	22
Rotherham Titans	13	4	0	9	219	310	-91	5	21
Birmingham & Solihull†	13	0	0	13	166	495	-329	2	-13

* London Welsh deducted 5 points

† Birmingham & Solihull deducted 15 points

In Stage 2 of the RFU Championship, clubs in yellow will play in Pool A, clubs in green will play in Pool B. The clubs below the dotted line will play in Pool C.

THIS WEEK'S RESULTS

Saturday 12th December

Bedford Blues 16 – 19 Plymouth Albion

Birmingham & Solihull 6 – 29 London Welsh

Exeter Chiefs 45 – 11 Coventry

Rotherham Titans 0 – 15 Bristol Rugby

Sunday 13th December

Cornish Pirates 10 – 12 Doncaster

Nottingham 30 – 15 Moseley

UPCOMING FIXTURES

Friday 18th December

Bristol Rugby – Bedford Blues

Coventry – Cornish Pirates

Saturday 19th December

Birmingham & Solihull – Nottingham

Doncaster Knights – Moseley

London Welsh – Rotherham Titans

Plymouth Albion – Exeter Chiefs



POINTS

TOP TRY SCORERS

Player	Club	Tries
Dan Norton	Bristol	9
Blair Cowan	Cornish Pirates	7
Luke Fielden	Bedford	6
Tom Arscott	Bristol	6
Wes Davies	Cornish Pirates	6
Matthew Jess	Exeter Chiefs	6
Richard Baxter	Exeter Chiefs	6
Nathan Bressington	Moseley	6
Ben Mercer	Plymouth	6

Hat-Tricks

Ian Davey	Bedford Blues v Birmingham & S	10 th October 2009
Richard Baxter	Exeter Chiefs v Rotherham Titans	24 th October 2009
Tom Arscott	Bristol v Coventry	30 th October 2009

TOP POINTS SCORERS

Player	Club	Tries	Conv	Pens	DG	Total
Gareth Steenson	Exeter Chiefs		29	24		130
Adrian Jarvis	Bristol		28	22		122
Aled Thomas	London Welsh	2	14	25		113
Tristan Roberts	Moseley		11	28	1	109
Jonny West	Rotherham		11	26	3	109
Kieran Hallett	Plymouth	2	9	16	2	82
James Pritchard	Bedford	2	14	14		80
Alistair Warnock	Doncaster	1	14	12	3	78
Greig Tonks	Nottingham		18	13		75
Miles Dorrian	Bedford	3	9	7		54

TRIES BY CLUB

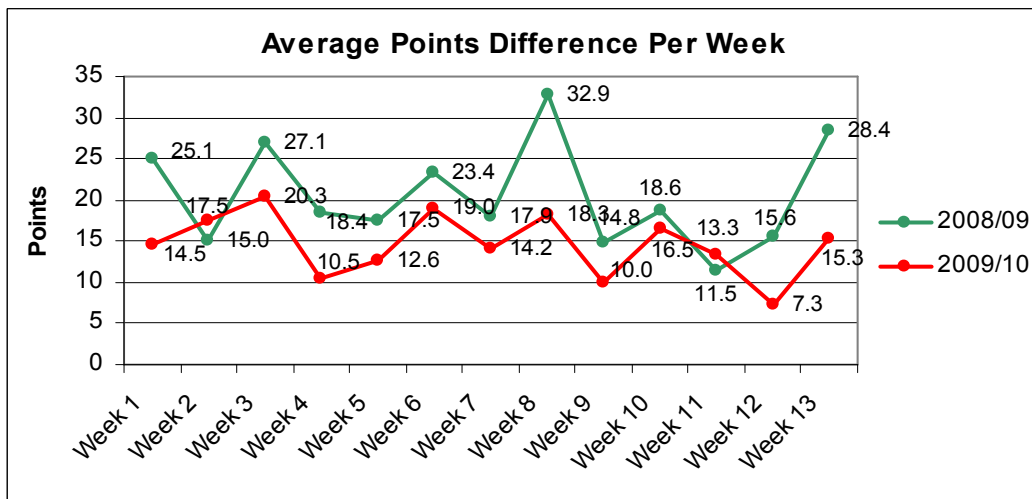
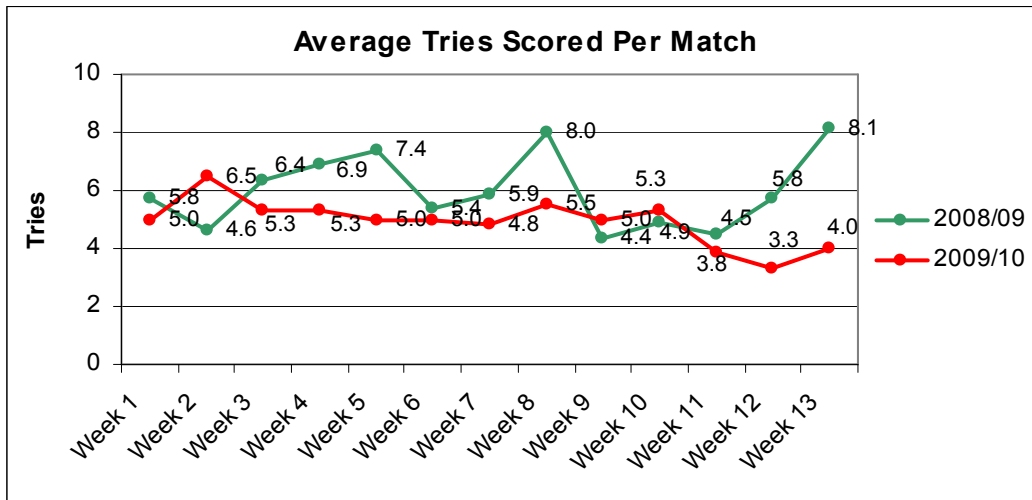
	Weeks 1-8	Week 9	Week 10	Week 11	Week 12	Week 13	Total
Exeter	34	2	5	3	1	6	51
Bristol	23	8	5	5	4	3	48
Nottingham	31	3	1	1	1	4	41
Bedford	30	1	3	2	2	1	39
Cornish Pirates	27	2	3	0	2	1	35
London Welsh	23	0	1	3	2	4	33
Moseley	20	2	3	1	1	0	27
Plymouth Albion	12	5	1	4	2	2	26
Coventry	15	3	1	2	3	1	25
Doncaster	12	2	5	1	0	2	22
Rotherham	12	1	3	1	2	0	19
Birmingham	16	1	1	0	0	0	18
Weekly Total	255	30	32	23	20	24	384



TRY SCORING TRENDS

As the winter draws in so the number of tries scored in the RFU Championship has dropped. In comparison with last year, there was a paucity of tries across the league but the matches remain far tighter. Plymouth Albion were victors by 3 points at Bedford Blues and Doncaster held on for a 2 point victory at Cornish Pirates.

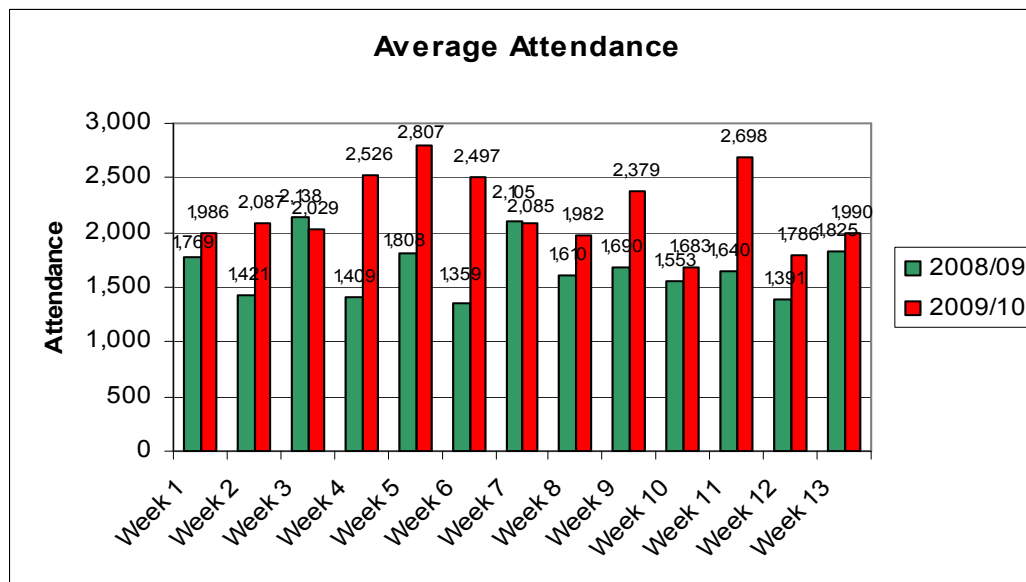
Elsewhere, Exeter Chiefs, London Welsh and Nottingham were doing their best to boost the try count as they all picked up bonus points in relatively comfortable wins.





ATTENDANCES

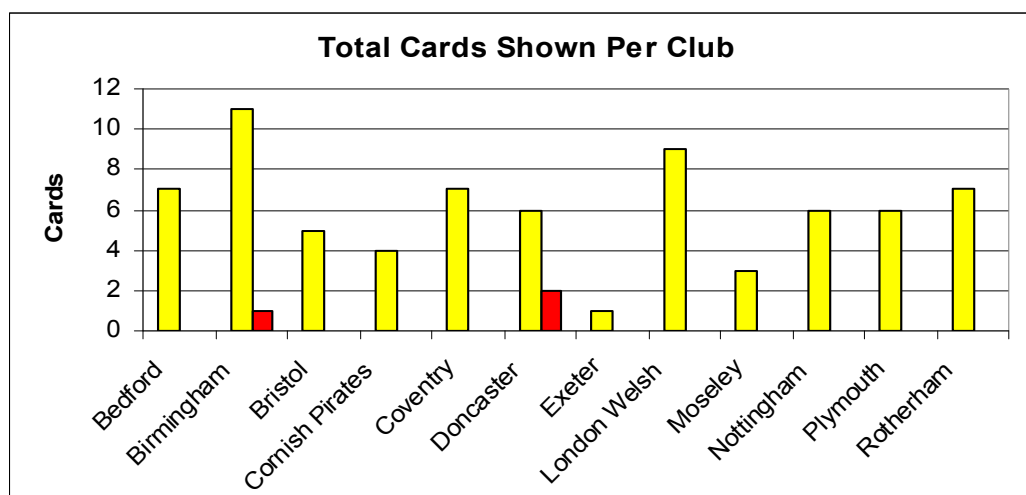
Attendances in the RFU Championship once again surpassed the equivalent week from last season despite the chill – an average of 1,990 were at each match. Exeter Chiefs hosted the biggest crowd of the weekend and the league leader's total attendance for the season passed 25,000 in their sixth home game.



ATTENDANCE FIGURES

Club	24-Oct	31-Oct	07-Nov	14-Nov	05-Dec	12-Dec	Sub Total
Bedford		3297		2282		2353	18,031
Birmingham & S		1084		477		407	4,047
Bristol		4839		4784	4440		35,437
Cornish Pirates	2530		2465			2667	17,104
Coventry	1076		1133		1306		9,652
Doncaster	1907		1312		1365		10,401
Exeter	3828			6158		3952	26,961
London Welsh		1690		874	910		9,344
Moseley	964		978		901		6,239
Nottingham	1584		1216			1303	8,600
Plymouth		2078	2993		1795		17,744
Rotherham		1287		1610		1257	7,845
Sub Total	11,889	14,275	10,097	16,185	10,717	11,939	171,405
Weekly Average	1,982	2,379	1,683	2,698	1,786	1,990	2,198

Highest 6,895 Bristol v Exeter Chiefs October 4th
 Lowest 367 Birmingham v Exeter Chiefs October 17th

DISCIPLINE

CARDS BY TYPE

Week 13	Yellow Cards			Red	Total Cards
	Technical	Foul Play	Total		
2008/09	4	3	7	1	8
2009/10	1	5	6	0	6

Season	Yellow Cards			Red	Total Cards
	Technical	Foul Play	Total		
2008/09	80	34	114	3	117
2009/10	38	34	72	3	75

CARDS BY CLUB

Club	Yellow	YR	Red	Total
Bedford	7			7
Birmingham	11		1	12
Bristol	5			5
Cornish Pirates	4			4
Coventry	7			7
Doncaster	6	1	2	8
Exeter	1			1
London Welsh	9			9
Moseley	3			3
Nottingham	6			6
Plymouth	6			6
Rotherham	7			7
	72	1	3	75