

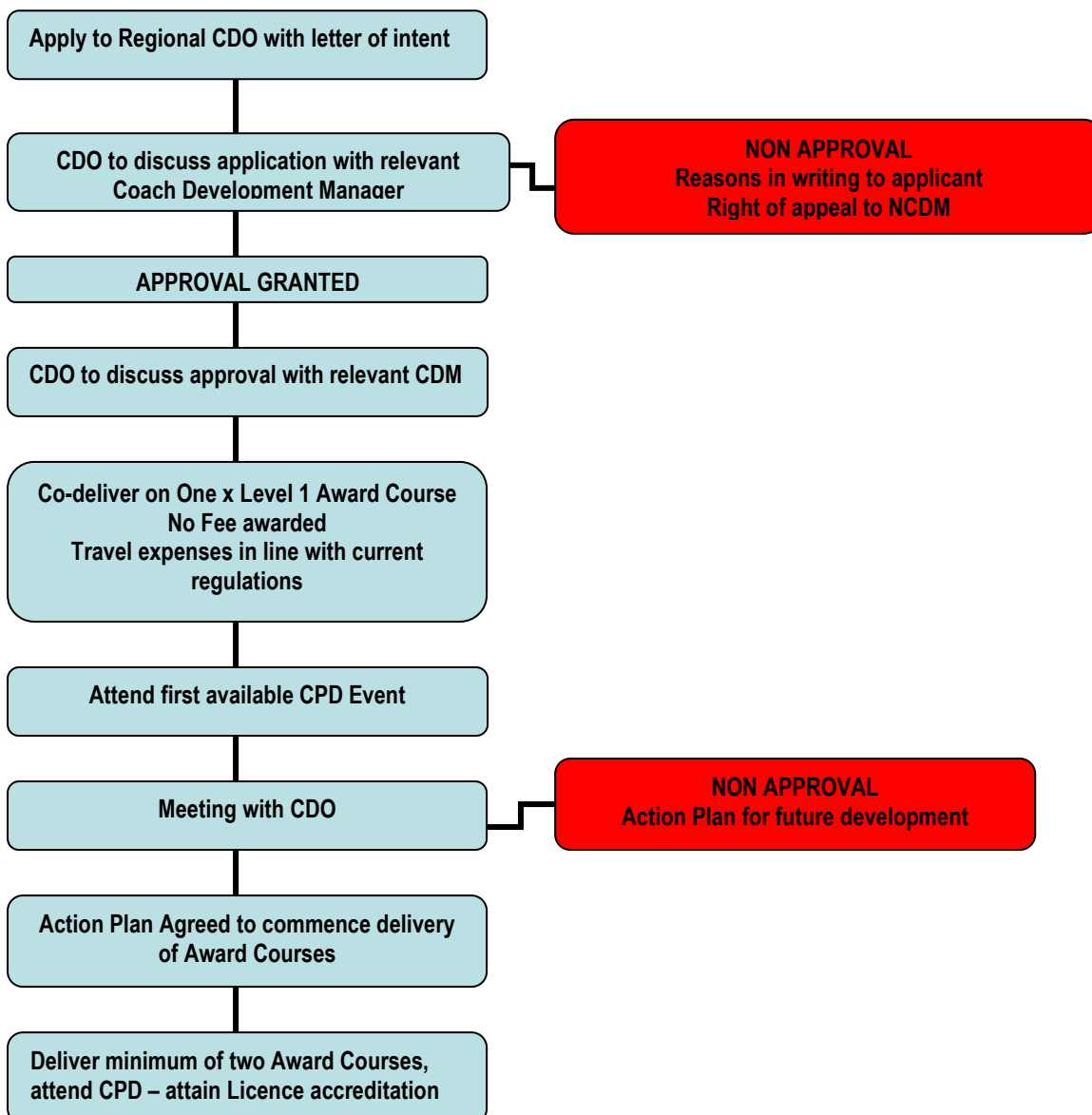
## 3 Union Trainers/Coach Educators

Process for re entry into RFU scheme after licence has expired.

This process applies to Trainer/Coach Educators who have been out of the system for up to 1 year and wish to be reinstated. (Licence commences and is awarded on 1<sup>st</sup> January each year)

### RFU Coach Review Board (“CORB”)

If a licence has been withdrawn or suspended by the CORB then this process does not apply.  
Current terms and conditions of the licence scheme can be found on the RFU website or supplied by your Regional Coach Development Officer (CDO)



**Note;**  
Any Trainer or Coach Educator who has been out of the system for more than 12 months will be required to re train at their own expense. Application to be reinstated should be made in writing to the Regional CDO who will then process the application through the relevant CDM. The Regional CDO is the main point of contact and should be consulted in all cases from the outset.